



FINDITBEIT.ORG



COLLEGE YOUR WAY

# SCIENCE, TECHNOLOGY, ENGINEERING AND MATH



**Career  
Education**  
COLLEGE YOUR WAY



California  
Community  
Colleges

CAREER EDUCATION

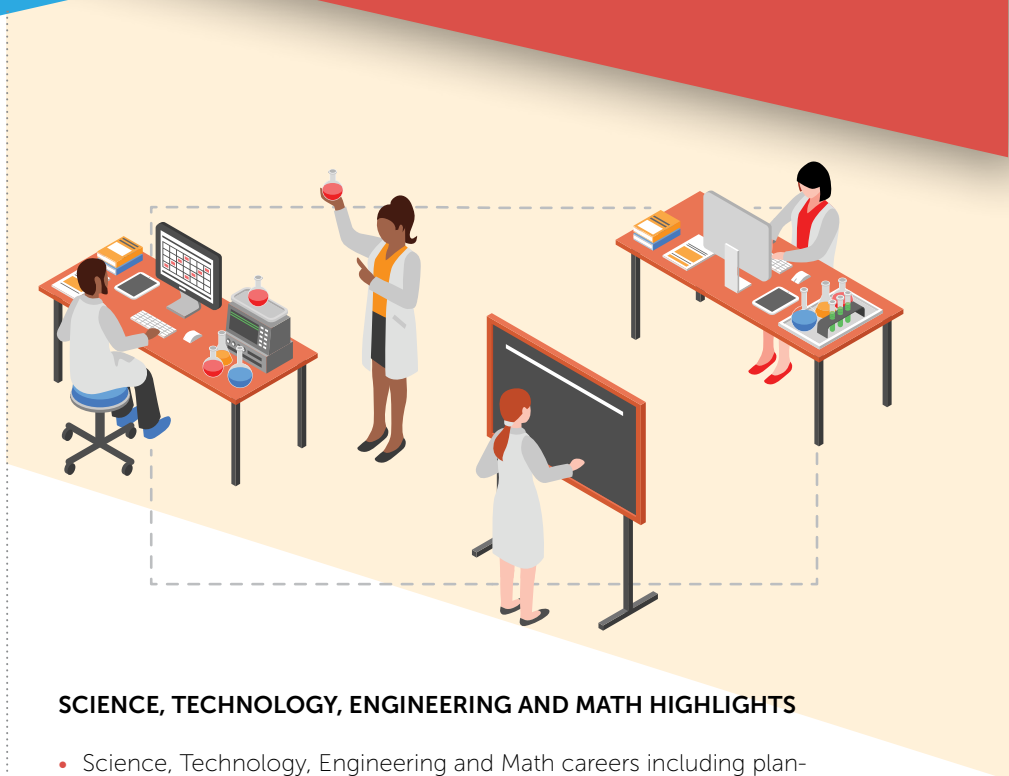


## SCIENCE, TECHNOLOGY, ENGINEERING AND MATH

You are an analytical and strategic thinker. You like designing or fixing things. You want a good-paying job without having to move away from your community. Science, Technology, Engineering and Math could be your fit.

Find your future at **finditbeit.org**. Explore career programs offered at colleges throughout the region and take a 6-question quiz to match your interests to programs that prepare you for well-paying jobs close to home.

For information about career programs in Science, Technology, Engineering and Math, contact



### SCIENCE, TECHNOLOGY, ENGINEERING AND MATH HIGHLIGHTS

- Science, Technology, Engineering and Math careers including planning, managing, and providing scientific research and professional and technical services (e.g., physical science, social science, engineering), including laboratory and testing services, and research and development.<sup>1</sup>
- More than half of the projected job openings in occupations assigned to the science, technology, engineering, and mathematics cluster are in the engineering and technology pathway.<sup>2</sup>

### JOBS IN THIS CLUSTER<sup>1</sup>

#### Chemical Technicians

Median annual salary: \$34,089\*

#### Surveying Technicians

Median annual salary: \$57,487

#### Civil Engineering Technicians

Median annual salary: \$59,876

#### Electro-Mechanical Technicians

Median annual salary: \$65,142

#### Electronics Engineering Specialists

Median annual salary: \$69,329

*\*Median annual salary varies by region.*

### TYPICAL EMPLOYERS IN THIS CLUSTER<sup>3</sup>

Scientific research and development services  
Architectural and engineering services  
Semiconductor and electronic components companies

#### SOURCES:

1. California Community Colleges Career Coach
2. Bureau of Labor Statistics, Career Outlook, March 2015
3. California Employment Development Department Occupational Profile.